



Partnering with Business to achieve Best Practice through Organisational Learning



Australia's leading traffic control company

Employer of choice in the traffic control industry

Complete traffic management solutions

Traffic planning, permits and plans

Full range of traffic control vehicles & equipment



Bridge Maintenance

- Expansion joint specialist
- Bridge maintenance
- Waterproofing systems
- Concrete repair & strengthening

Safety Barriers

- W-beam barriers
- Wire rope safety barriers
- Crash cushions & end treatments
- Thriebeam safety barriers



Registered Training Organisation # 31733

Civil construction training including:

- Roadmarking
- Bridge construction & maintenance
- Road construction & maintenance
- Plant operations
- Pipe laying

Traffic management and traffic control training



Fully-maintained fleet rental & leasing

Fixed price servicing & maintenance

In-field & mobile support

Telematics & performance reporting

Driver training

Vehicle selection & fitout

www.theevolutiongroup.com.au

Evolution Training and Safety

- Certificate III in Civil Construction
- Traffic Management and Control
- White Card
- First Aid
- Corporate Training



Evolution Training and Safety

**Partnering with Business to
achieve Best Practice through
Organisational Learning**



Harmonisation Training

- **Communication**
- **Follow WHS procedures**
- **Implement Traffic Control Plan**

Traffic Management Training

- Codes of Practice Temporary Traffic Management (CoPTTM)
- Part 5 - Mobile Works
- Category 1, 2 & 3 roads

Category 1

These roads have an average daily traffic volume less than 10,000 vehicles per day (VPD) for rural roads and less than 15,000 VPD for roads in built-up areas.

This encompasses:

- most urban streets
- most rural roads
- most rural highways.

Category 2

These are high volume roads with an average daily traffic volume greater than 10,000 VPD for rural roads and greater than 15,000 VPD for roads in built-up areas. This may encompass:

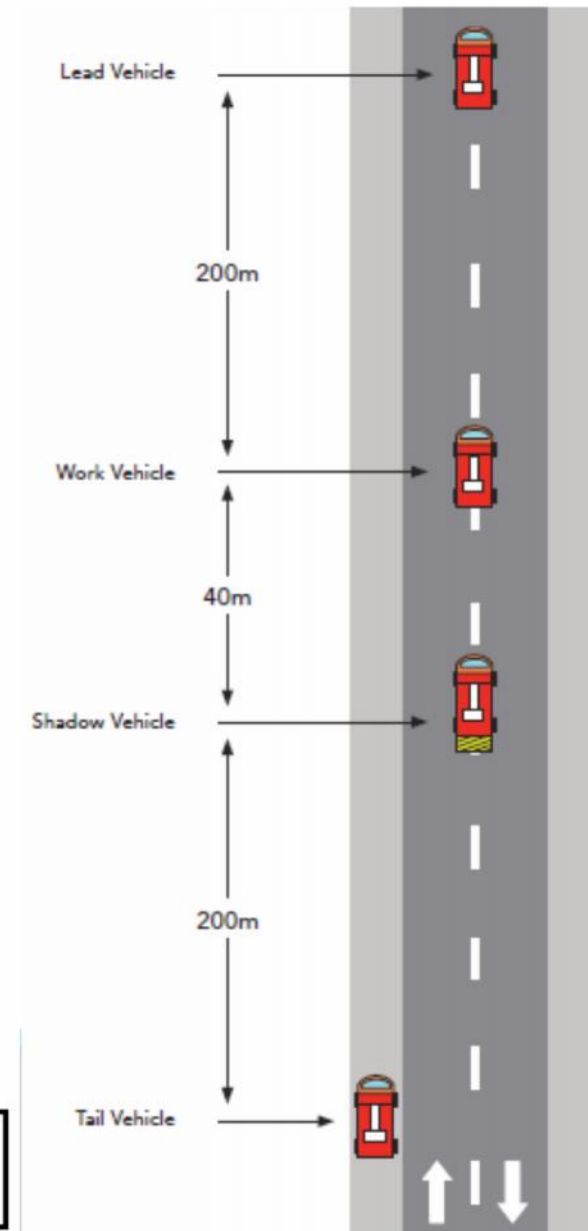
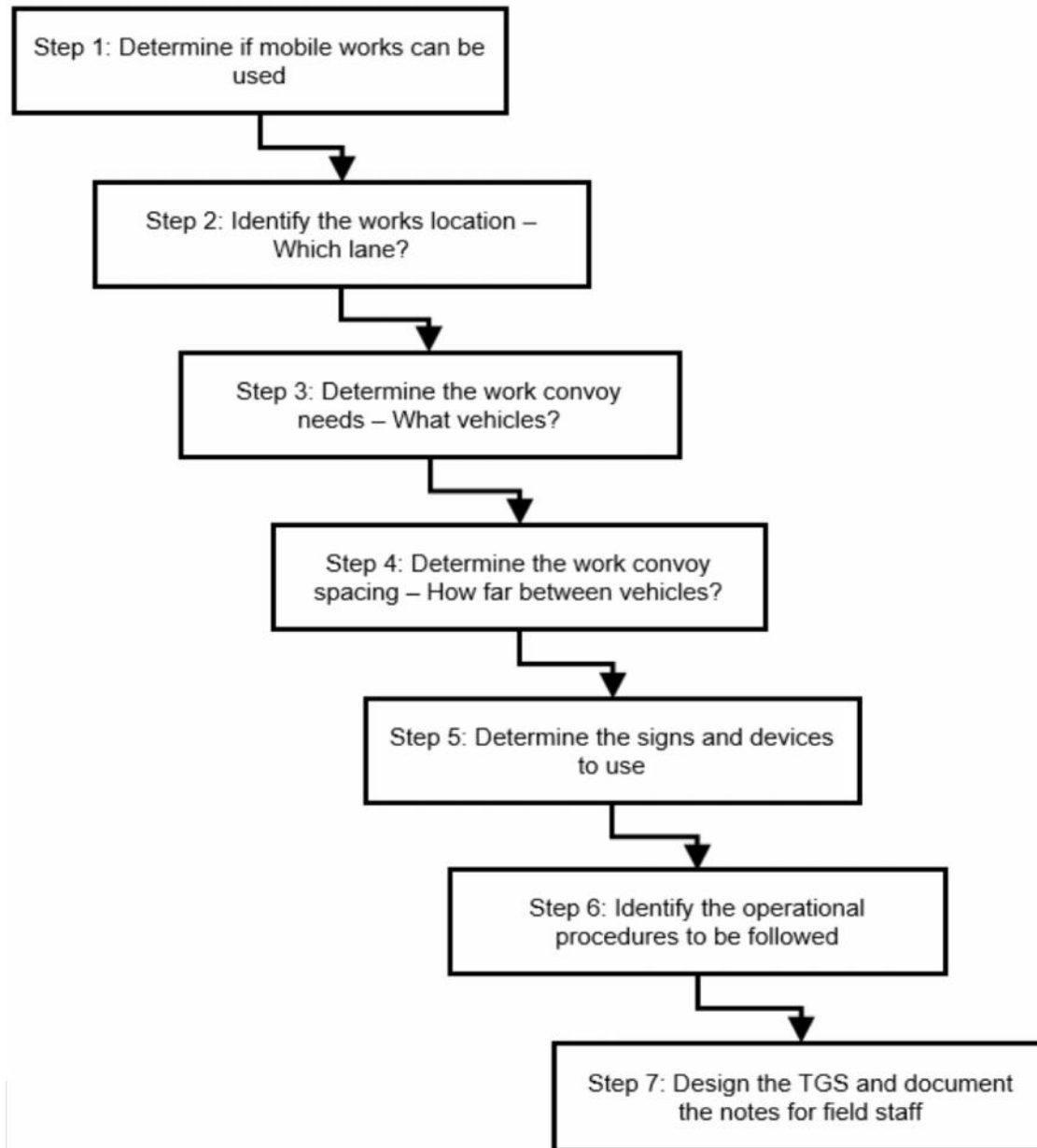
- major urban streets
- some arterial roads
- some two-lane, two-way roads
- one-way streets
- multilane roads.

Category 3

These are high volume, high speed roads with an average daily traffic volume greater than 15,000 VPD for all roads and traffic speeds equal to or greater than 80 km/h. This may encompass:

- high-volume and high-speed multilane roads
- motorways
- on and off ramps.

Communication



Safe Work Procedures



Edge Line

Lane Line

Centre Line



Implementing Traffic Control

- Communicate with traffic controllers
- Consider static closure on HSHV
- Ensure traffic control is implemented using hierarchy of control in all situations

